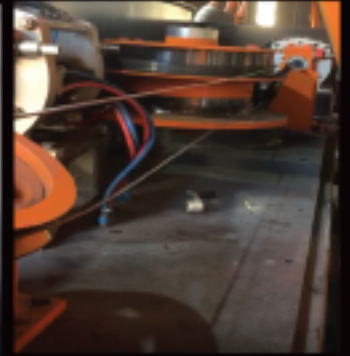
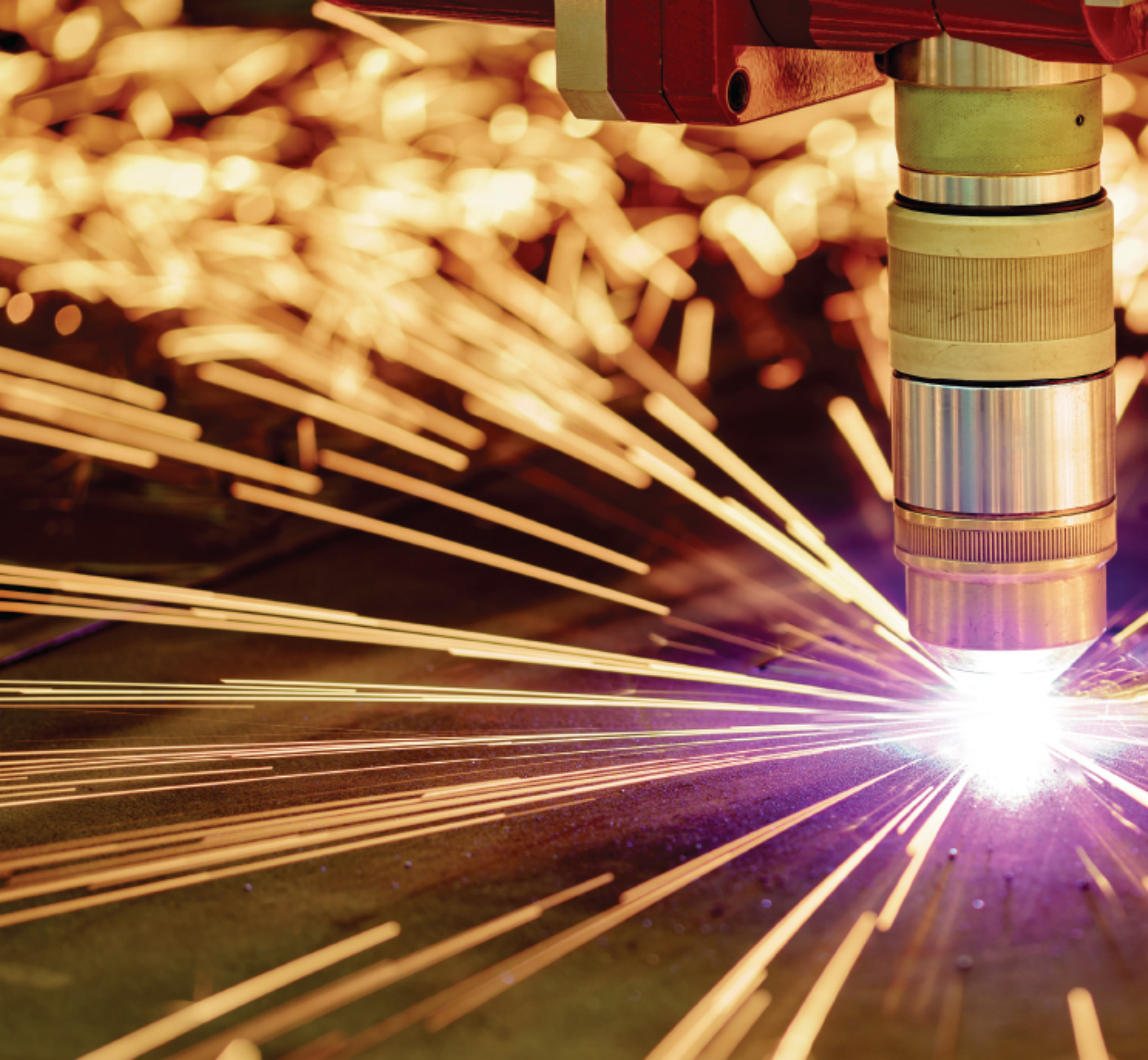




Dallı Makine

REINFORCING WIRE & WIRE PROCESSING EXPERT



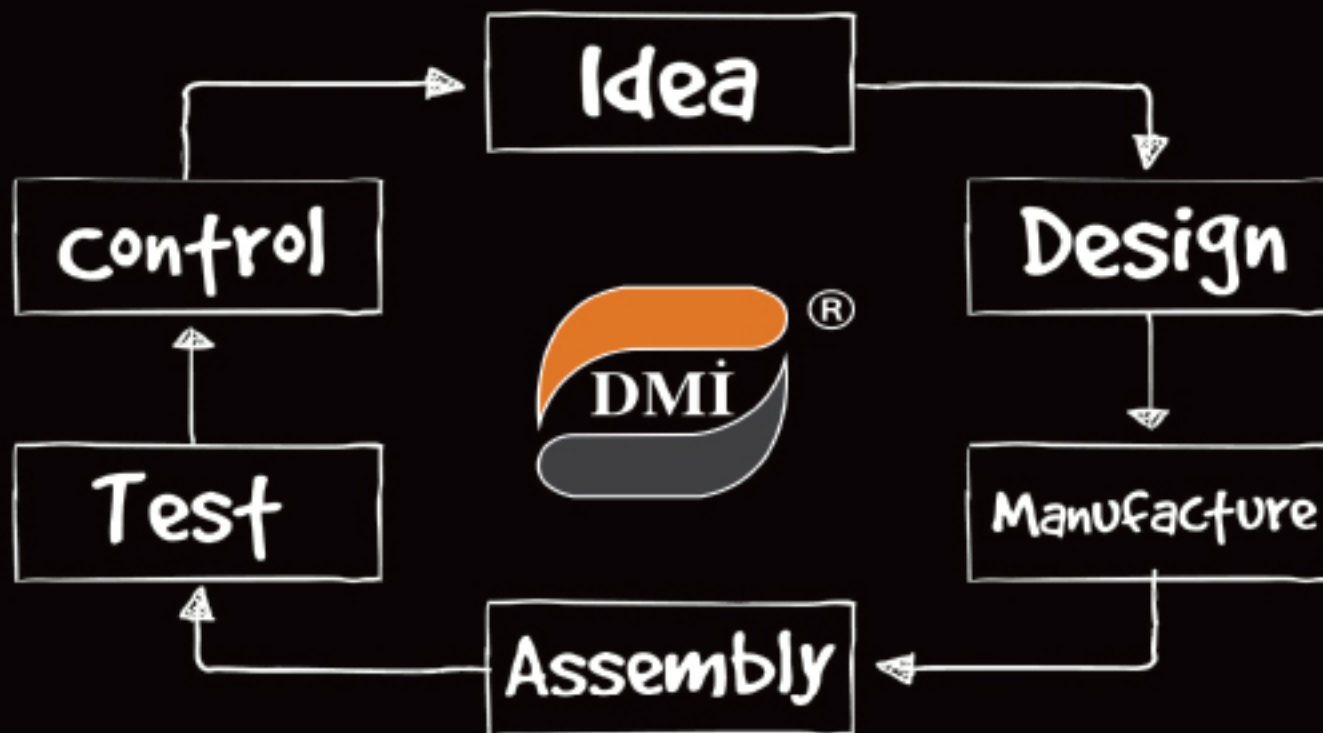




PERFECT EXPERIENCE

DALLI MAKİNA established in 2001 for providing machinery, service, spare parts and support to welded wire mesh sector at world standarts. We mainly produce reinforcing wires/bars, wire processing and auxiliary machines with innovative engineering solutions by using production costs effectively with today's technology. Our machines which are composed of quality components have a different identity earned due to their design, mechanical and software.

Through our close business partnership with our customers, we aim to increase our competitive power in world market with total quality management principle in line with their increasing desires and disruptions in production, new projects as a brand that develops continuously and renews itself with best performance.

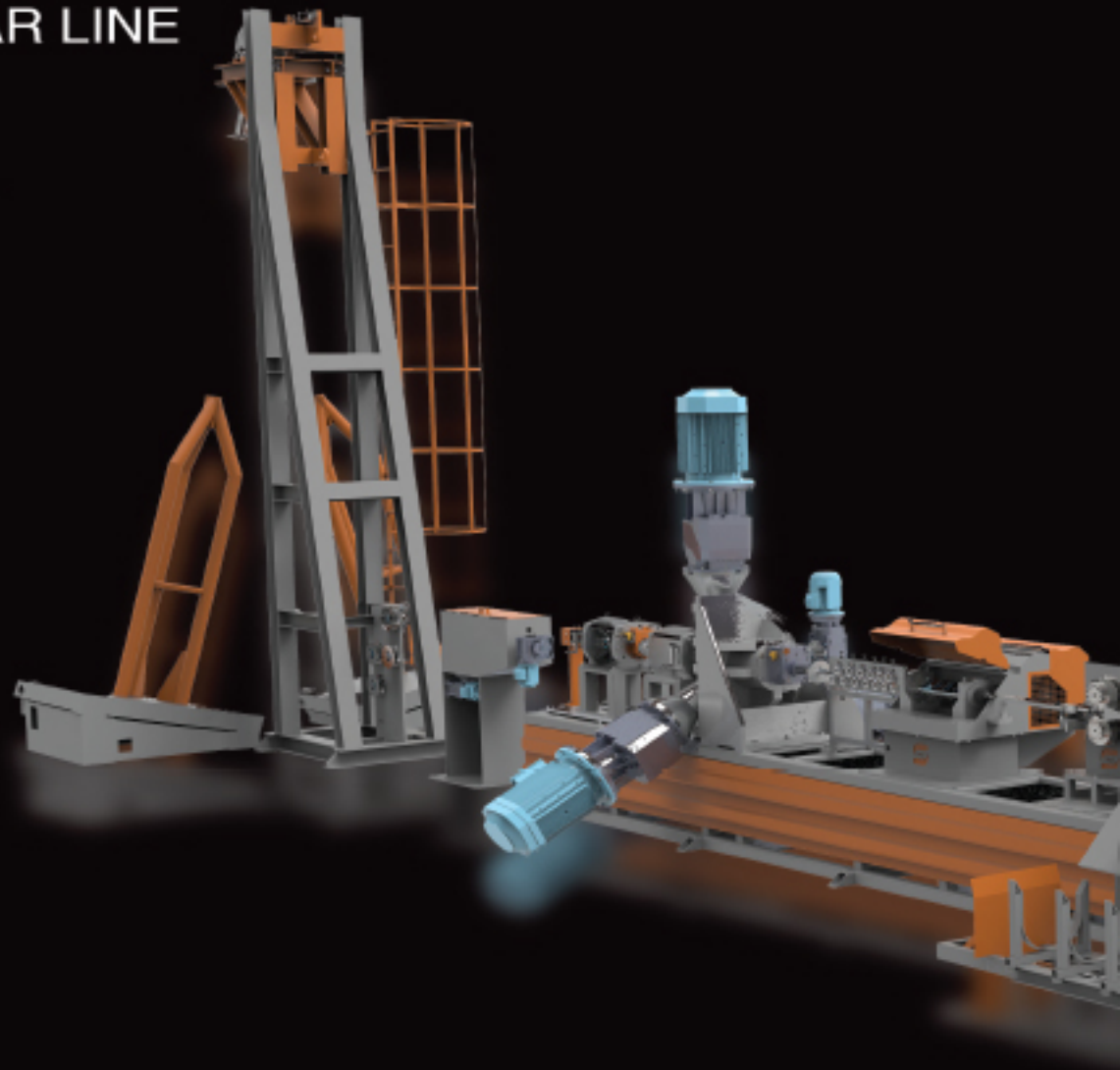


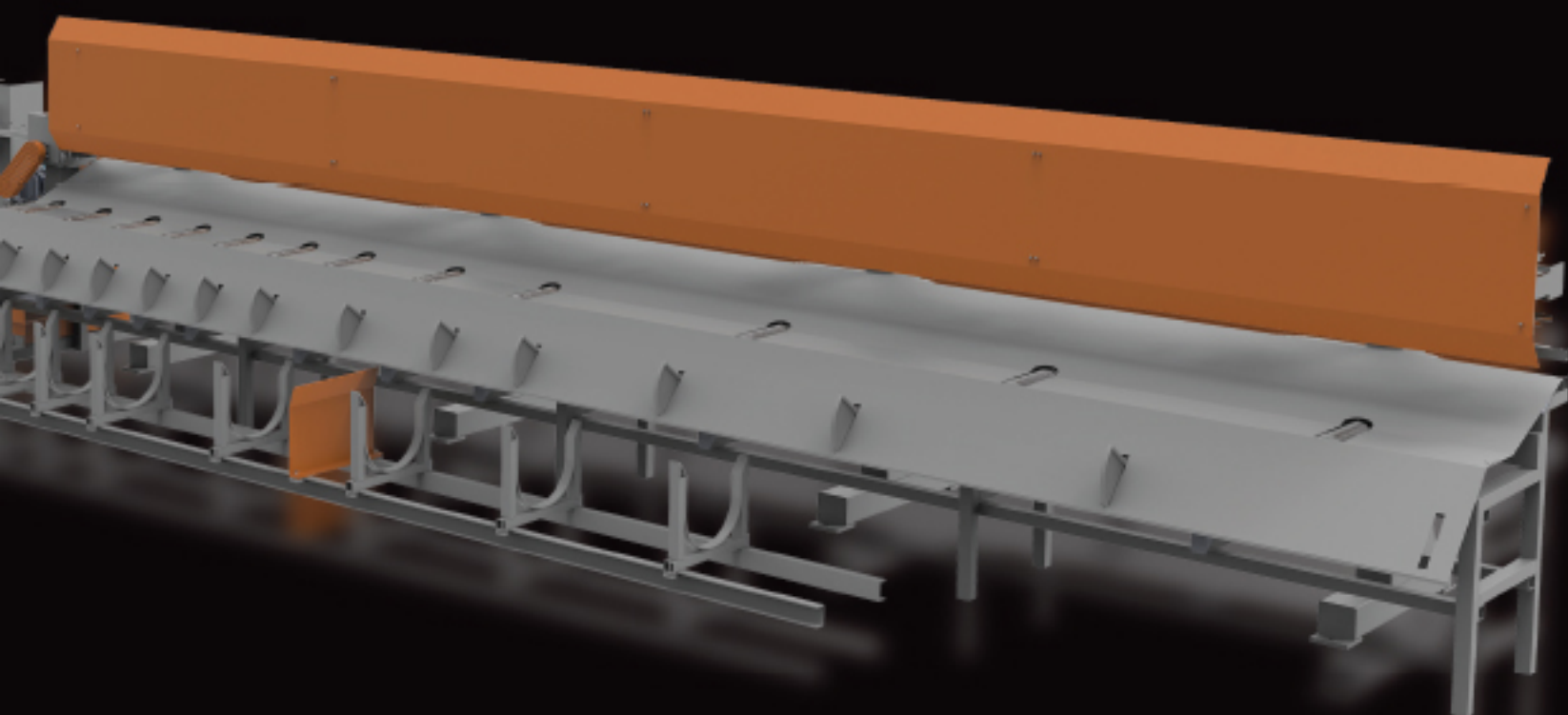
“LIMITLESS INNOVATION CYCLE”

FOR EVERY DMI PRODUCT
FOR TOP EFFICENY

COLD ROLLING REBAR LINE

Designed for producing reinforcing cut to length bars in bundles from wire rods only in single stage.






FULL AUTOMATIC COLD ROLLING REBAR LINE		
TECHNICAL DATA	DMI 217	DMI 400
Inlet wire rod	Ø 6,0mm - 9,0mm	Ø 6,0mm - 14,0mm
Finished drawn bars	Ø 4,5 mm - 8,0mm	Ø 4,5 mm - 12,0mm
Straight bar lenght	2000 - 12000mm	2000 - 12000mm
Tolerance on the lenght	+/- % 0,3	+/- % 0,3
Type of wire rod	SAE 1008 - 1010	SAE 1008 - 1010
Reduction process	Turk-head unit 3 motorized rolls	Turk-head unit 3 motorized rolls
Power	217 Kw	400 Kw
Production speed	300 m/minute	300 m / minute





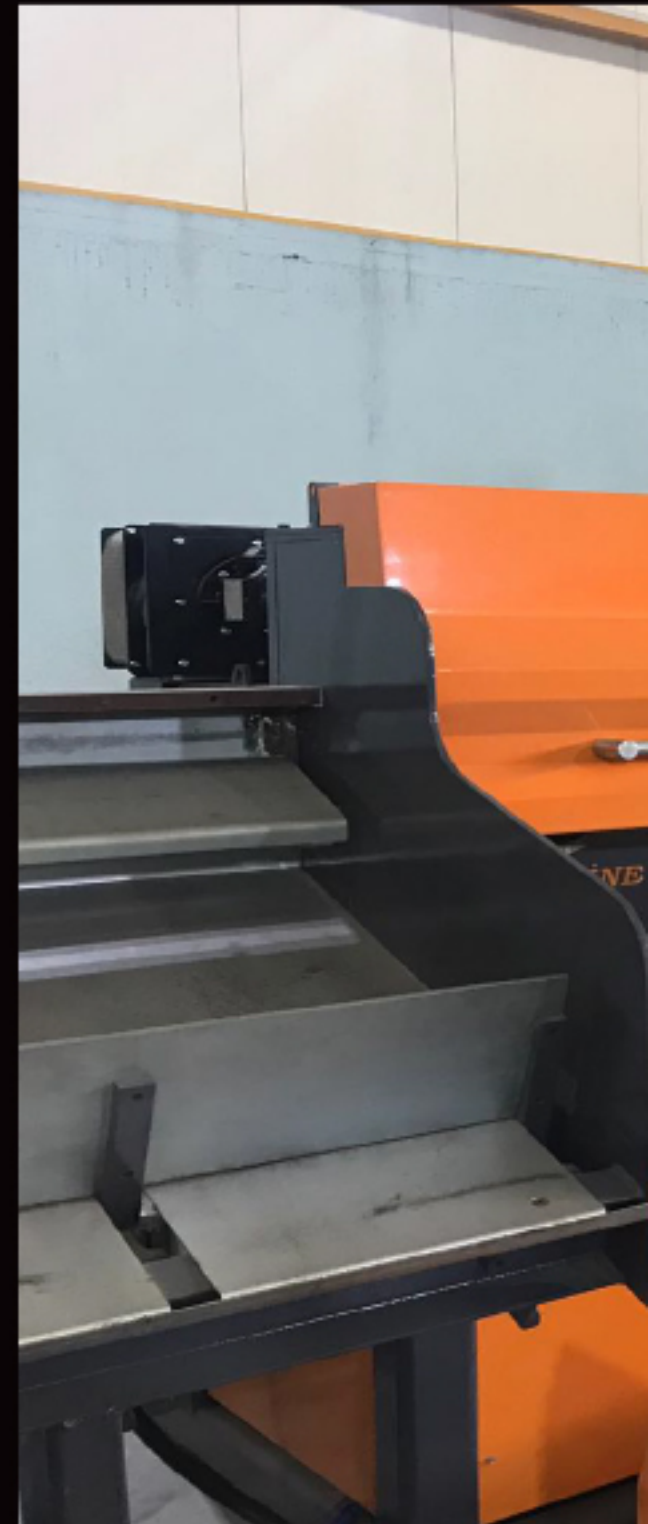


INNOVATIVE AND COST-EFFECTIVE SOLUTIONS



DMI 300 MULTIFLEX COLD ROLLING LINE

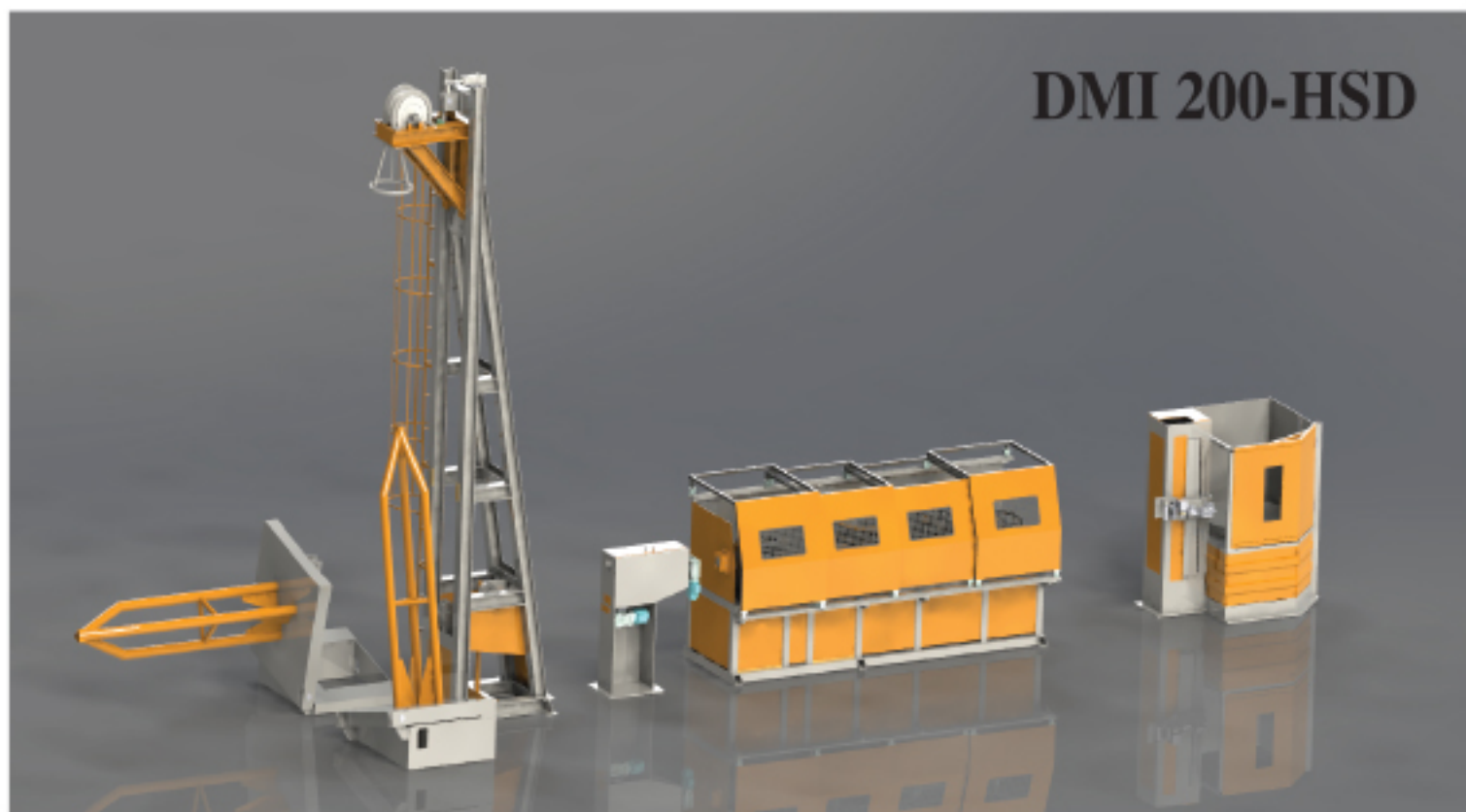
This machine designed for producing reinforcing/smooth cut to length bars in bundles and reinforcing/smooth coils of drawn wires from wire rods only in single stage. Also this machine can be used as two independent machines from each other as reinforcing/smooth wire rolling machine and straightening-cutting machine.





TECHNICAL DATA	MULTIFLEX COLD ROLLING LINE (DMI 300)
Inlet Wire Rod Diameter	Ø5,5mm-Ø14mm
Outlet Wire Rod Diameter	Ø4mm-Ø12mm
Straight Bar Length	2000mm-12000mm
Maximum coil weight of inlet rod	2.5 ton
Tolerance on the Length	+/- %0,035mm
Type of Wire Rod	SAE 1008/1010
Reduction Process	Double capstan with cold rolling cassettes
Total Power	300 kW
Production Speed (Straightening, drawing and cutting)	Maximum 300 meters/minute
Spooler Speed	Maximum 720 meters/minute

TECHNICAL DATA	DMI 148-2	DMI 200	DMI 250
Inlet Wire Rod Diameter	Ø5,5mm-Ø9,5mm	Ø5,5mm-Ø12mm	Ø5,5mm-Ø14mm
Outlet Wire Rod Diameter	Ø4mm-Ø8mm	Ø4mm-Ø10mm	Ø4mm-Ø12mm
Straight Bar Length	2000mm-12000mm	2000mm-12000mm	2000mm-12000mm
Maximum coil weight of inlet rod	2.5 ton	2.5 ton	2.5 ton
Tolerance on the Length	+/- %0,035mm	+/- %0,035mm	+/- %0,035mm
Type of Wire Rod	SAE 1008/1010	SAE 1008/1010	SAE 1008/1010
Total Power	148 kW	207 kW	250 kW
Production Speed	300 meters/minute	300 meters/minute	300 meters/minute



TECHNICAL DATA	DMI 200-HSD
Inlet Wire Rod Diameter	Ø5,5mm-Ø14mm
Outlet Wire Rod Diameter	Ø4mm-Ø12mm
Straight Bar Length	2000mm-12000mm
Maximum coil weight of inlet rod	2.5 ton
Tolerance on the Length	+/- %0,035mm
Type of Wire Rod	SAE 1008/1010
Reduction Process	Double capstan with cold rolling cassettes
Total Power	200 kW
Production Speed	720 meters/minute

A close-up, high-contrast photograph of an industrial process, likely grinding or welding. Bright, glowing orange and yellow sparks are flying from the bottom right towards the center. In the background, a blurred orange and black striped safety wheel is visible. On the right side, a portion of a metallic tool or machine part with circular holes is in focus.

HIGH QUALITY SERVICE



STRAIGHTENING AND CUTTING MACHINES





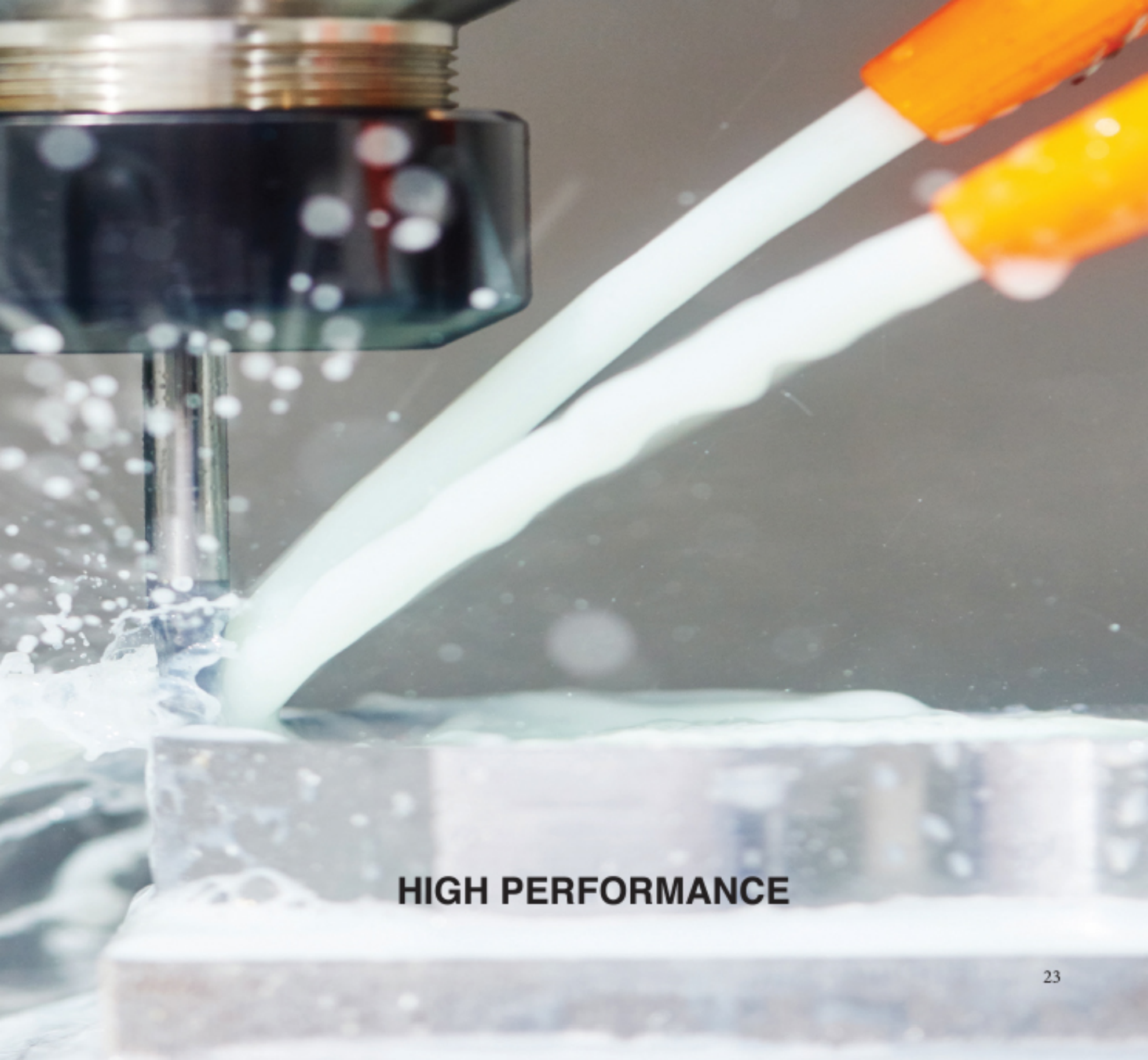
STRAIGHTENING AND CUTTING MACHINE		
TECHNICAL DATA	DMI 410	DMI 412
Working diameter	Ø 4,0mm - 10,0mm	Ø 4,0mm - 12,0mm
Straight bar lenght	1000 - 12000mm	1000 - 12000mm
Tollerance on the lenght	+/- % 0,035	+/- % 0,035
Type of wire rod	SAE 1008 - 1010	SAE 1008 - 1010
Production speed	120 m/minute	120 m / minute



TECHNICAL DATA	GIYOTIN (DMI G830)
Cutting Width	800mm
Work Range	Ø8mm-Ø30mm
Cutting System	Hydraulic
Package Loading Stand	Standard 12 meters
Falling System	Through pneumatic arms







HIGH PERFORMANCE

STRAIGHT-LINE DRAWING MACHINE

Straight line wire drawing machine mechanical, software designed and produced by DMI has international advanced technical parameters and performance. This machine can be designed and configured according to different finished products like low, medium and high carbon wire machines from each other as reinforcing/smooth wire rolling machine and straightening-cutting machine.



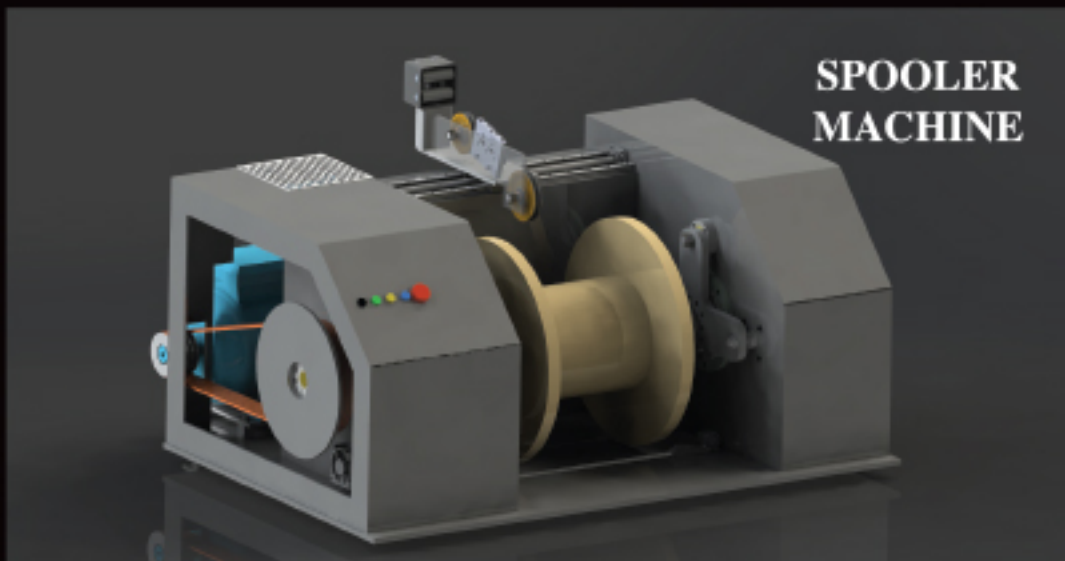


TECHNICAL DATA	DMI 710-630-8	DMI 400-7
Capstan Diameter(mm)	710-630	400
Inlet Diameter(mm)	Ø8mm-Ø6mm	Ø2.7mm-Ø2mm
Outlet Diameter(mm)	Ø2.5mm-Ø1.2mm	Ø2.2mm-Ø1mm
Tensile Strenght(Mpa)	≤1300	≤1300
Total Reduction %	90.23	79.33
Average Reduction %	21.0	21.0
Motor Power kW	37	15



DMI 710-630-8







ROLLING CASSETTES



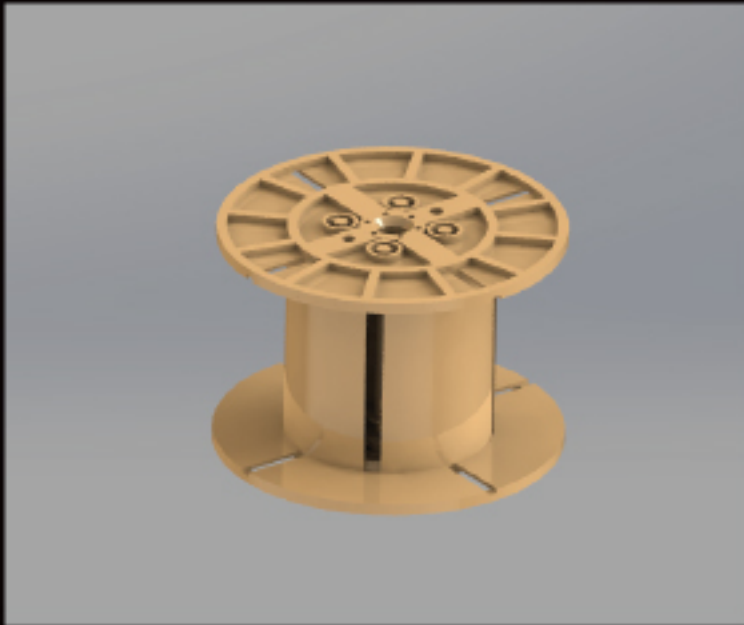
SPARE PARTS



TUNGSTEN CARBIDE ROLLERS



WIRE DRAWING DIES



OPENABLE PULLEY



PULLEY ROTATOR

OPENABLE PULLEY



GALVANIZING LINE TAKE UP AND PAY OFF



HYDRAULIC WIRE PACKING PRESS





Dallı Makine

Dallı Makine Sanayi Ticaret Ltd. Şti.

Adana O.S.B.Doğu Sanayi Sitesi Acıdere Mah.
6706 Sk. No: 7/C Sarıçam / ADANA / TURKEY

Tel.: +90 322 394 30 61 Fax: +90 322 394 30 71

e-mail: info@dallimakina.com

web: www.dallimakina.com